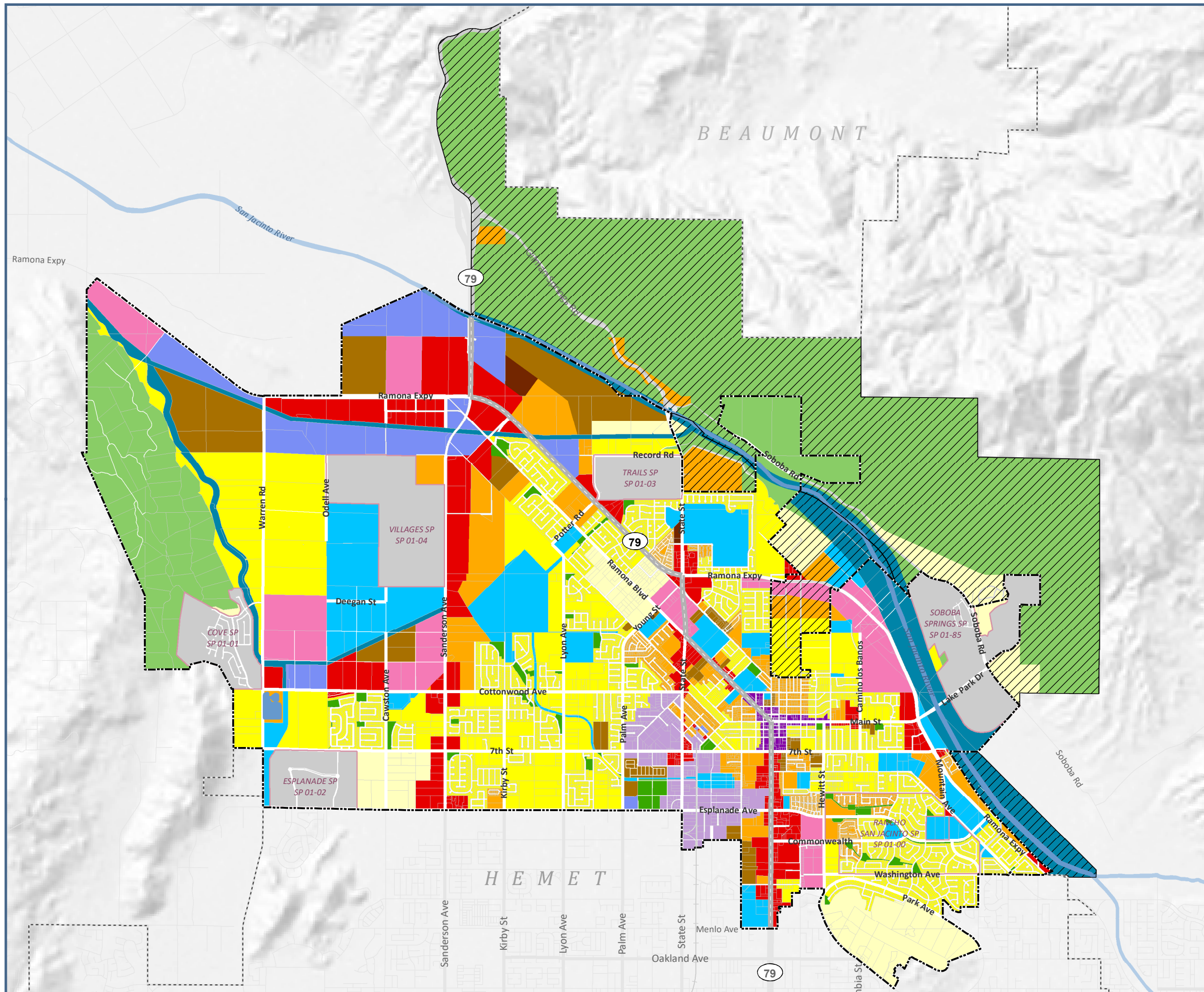


Figure 3-4.  
Proposed General Plan  
Land Use Map

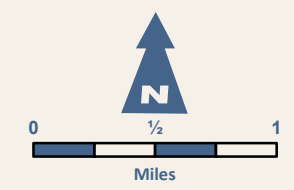


**Legend**

- City of San Jacinto
- San Jacinto Sphere of Influence
- Neighboring City

**Land Use Designation**

- VLDR: Very Low Density Residential
- LDR: Low Density Residential
- MDR: Medium Density Residential
- HDR: High Density Residential
- VHDR: Very High Density Residential
- MU: Mixed Use
- C: Commercial
- DV: Downtown Village
- BP: Business Park
- I: Industrial
- PI: Public/Institutional
- OS: Open Space
- P: Park
- SPA: Specific Plan Area
- Water



Sources: City of San Jacinto; Riverside County. Map date: October 7, 2022.

